

Concurrent Electrical/Mechanical Design

Artem Kornilov

Kevin Paul

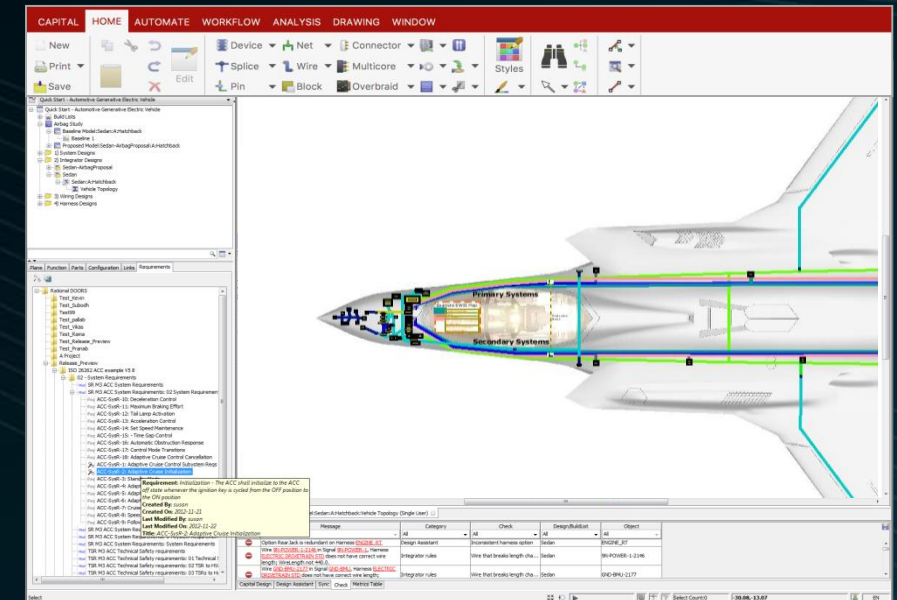
Nick Smith

Presented by Wu Kai

March 2017

Agenda

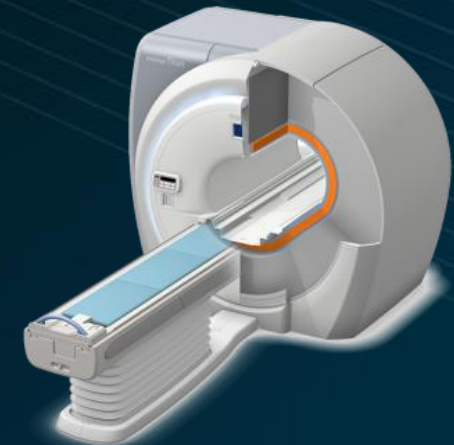
- Introduction
- Electrical Domain Flow
- Electrical/Mechanical Collaboration
- Demonstration: Capital[®] – NX Integration
- PLM Integration
- Summary



Introduction

Rapidly Rising Electrical/Electronic Content

- Complex platforms are electronics intensive
- Electrical domain = power & signal distribution
- Highly complex electrical interconnect (example: wafer stepper)
 - 4,000 sensors & actuators
 - 100 data networks
 - 10,000 network & software signals
 - Many configurations



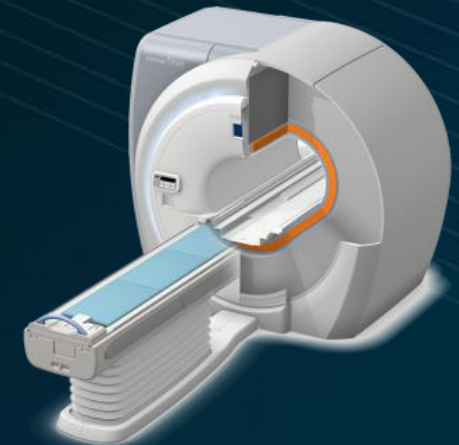
Commercial Reality

Powerful Tool Support Needed

■ Example factors

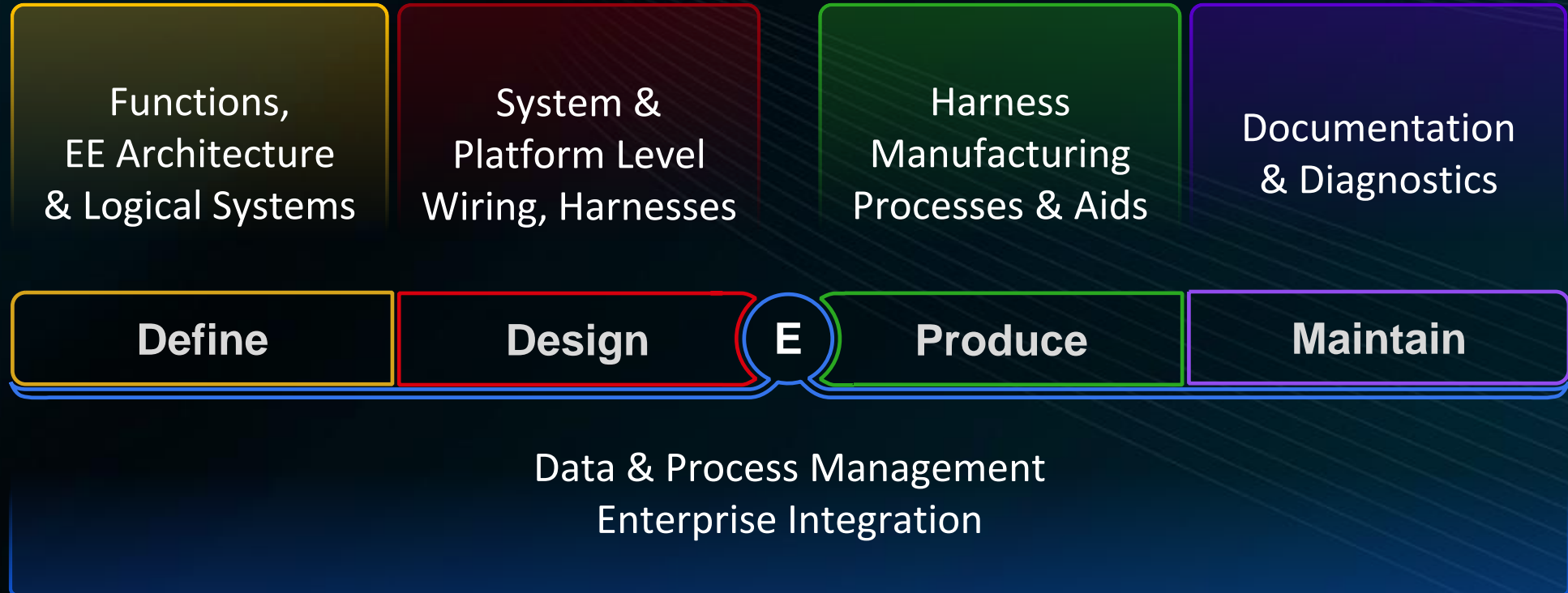
- Cost containment
- Time to market
- Mass customization
- Traceability & verification

► Technical complexity + commercial reality:
electrical domain must be part of the “digital twin”



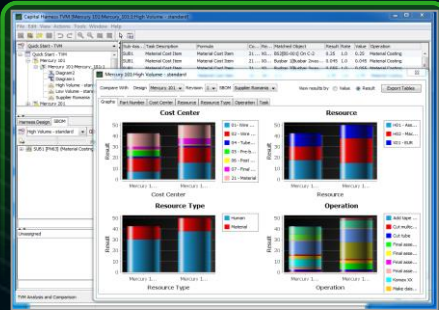
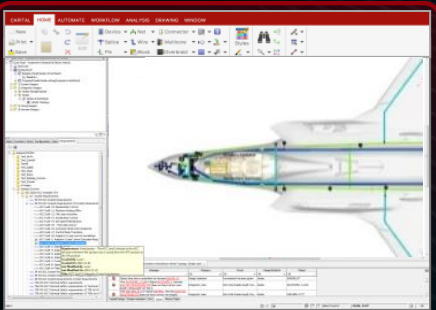
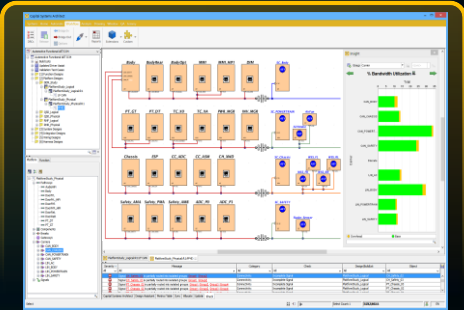
Electrical Domain Flow

Extended Flow Supported By Capital Tool Suite



Electrical Domain Flow

Extended Flow Supported By Capital Tool Suite



Define

Design

E

Produce

Maintain

Data & Process Management
Enterprise Integration



Requirements
Functional Models
Workflow



Product Plans
MCAD
Test Cases



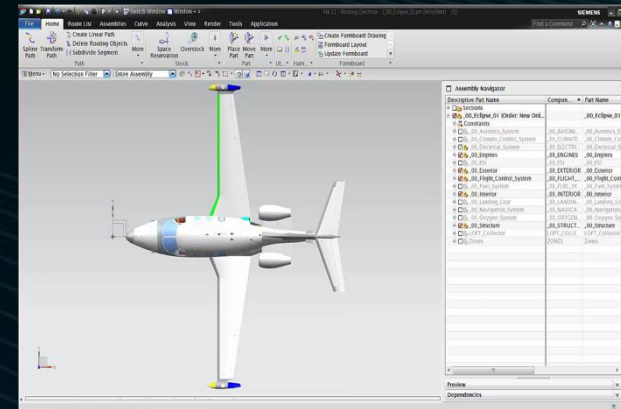
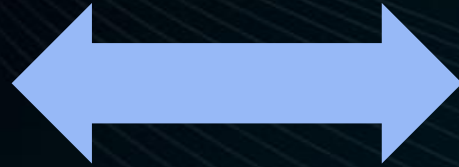
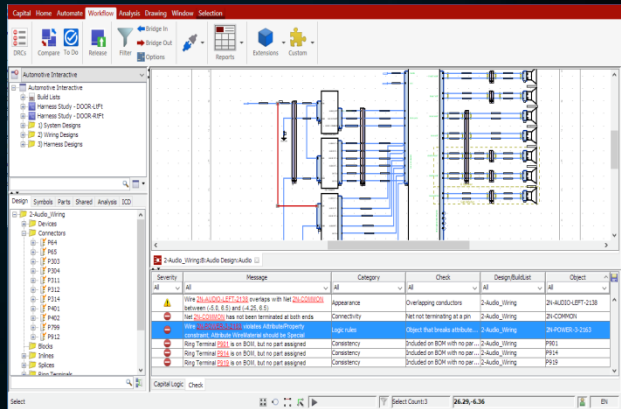
MES & ERP
Manufacturing
Equipment



PLM
Diagnostics

Electrical/Mechanical Collaboration Is Mandatory

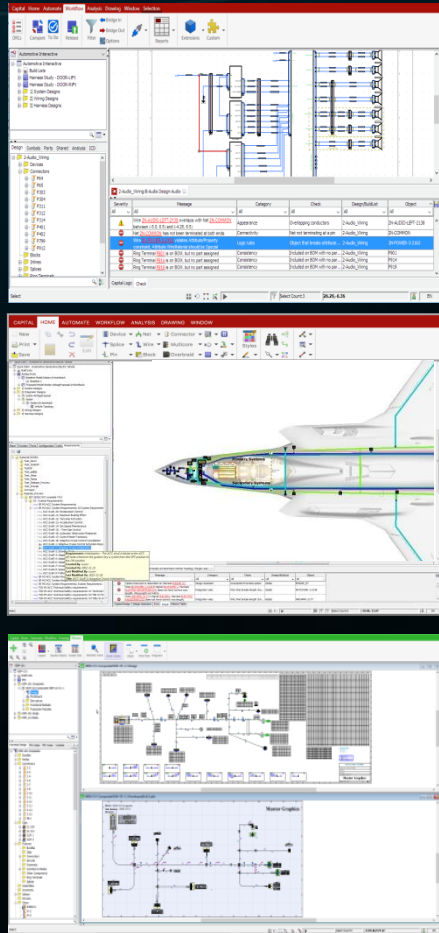
Example Needs



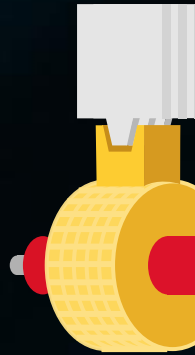
- Space reservation
- System integration
- Electrical simulation
- Signal separation

- Fixture placement
- Weight distribution
- Design for assembly
- Configuration & release management

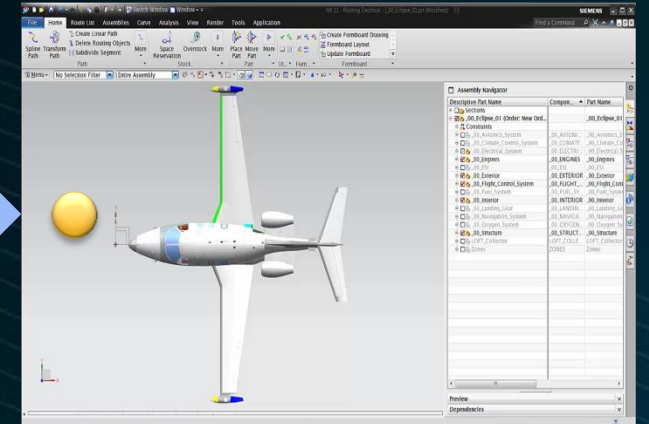
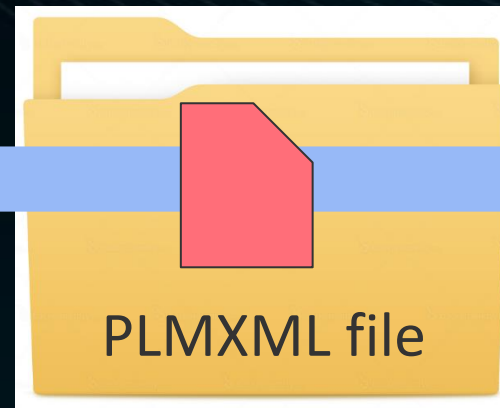
Capital/NX Integration Technology Exchange Process



Adaptors



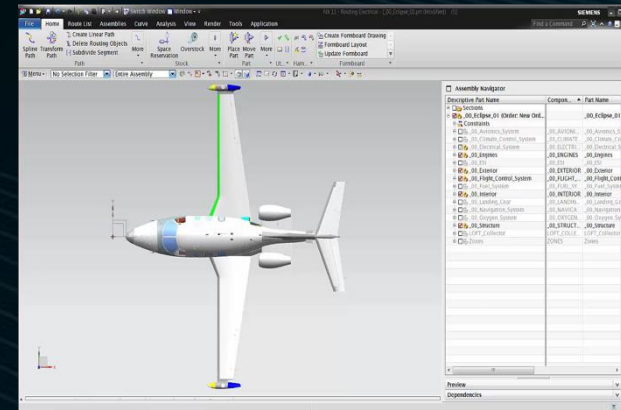
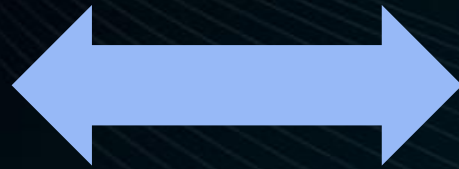
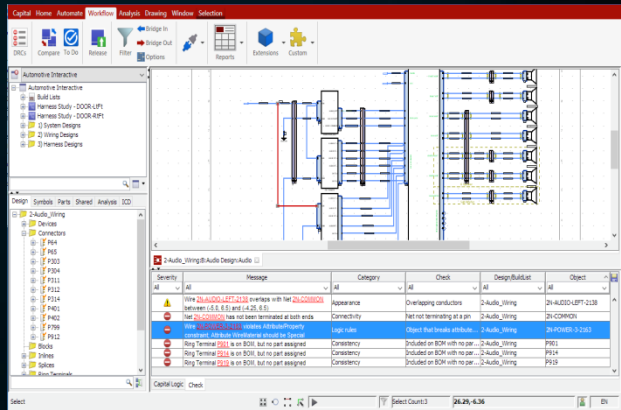
Integration Framework



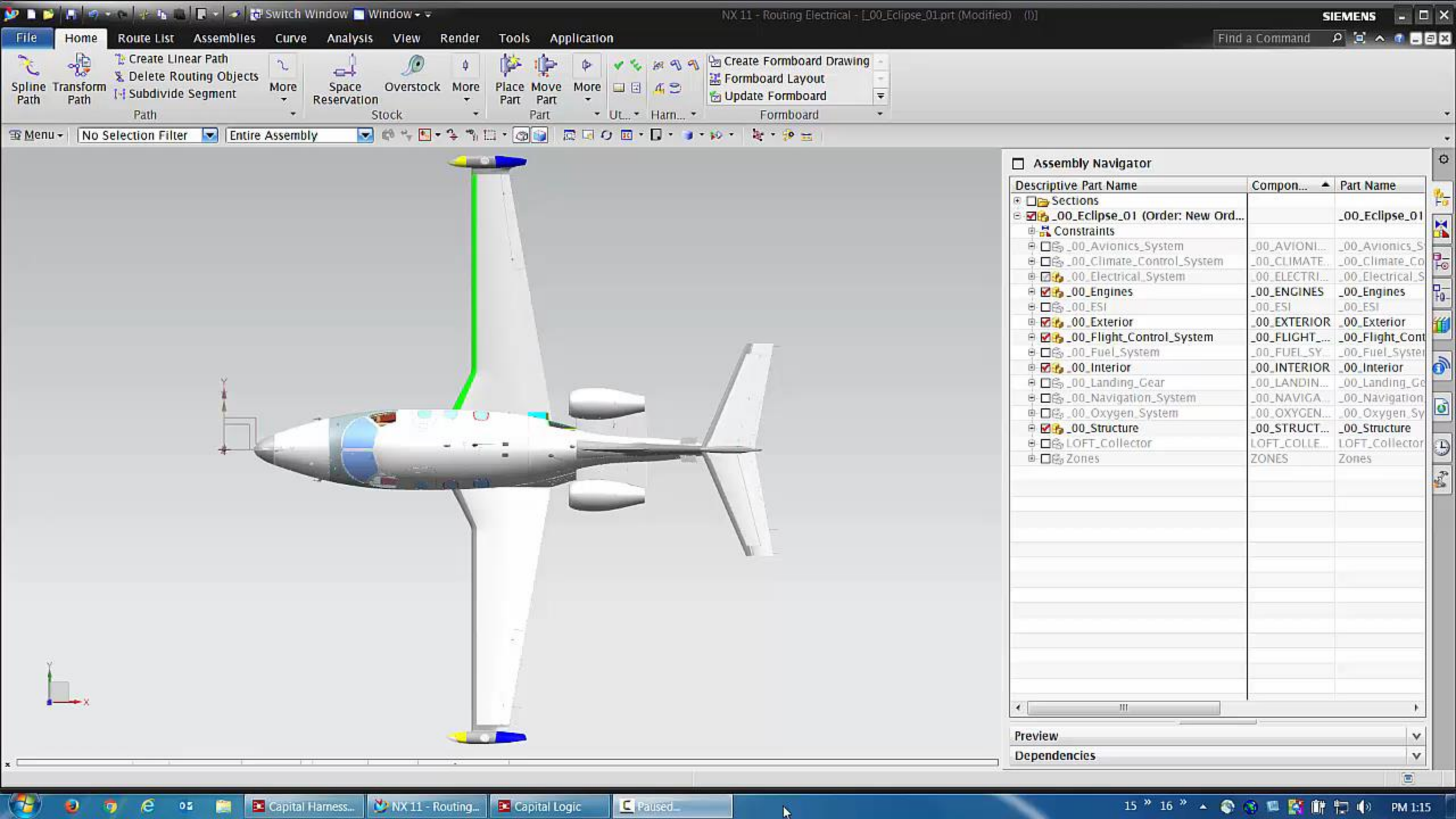
Allows richer integration experience, eg cross highlighting

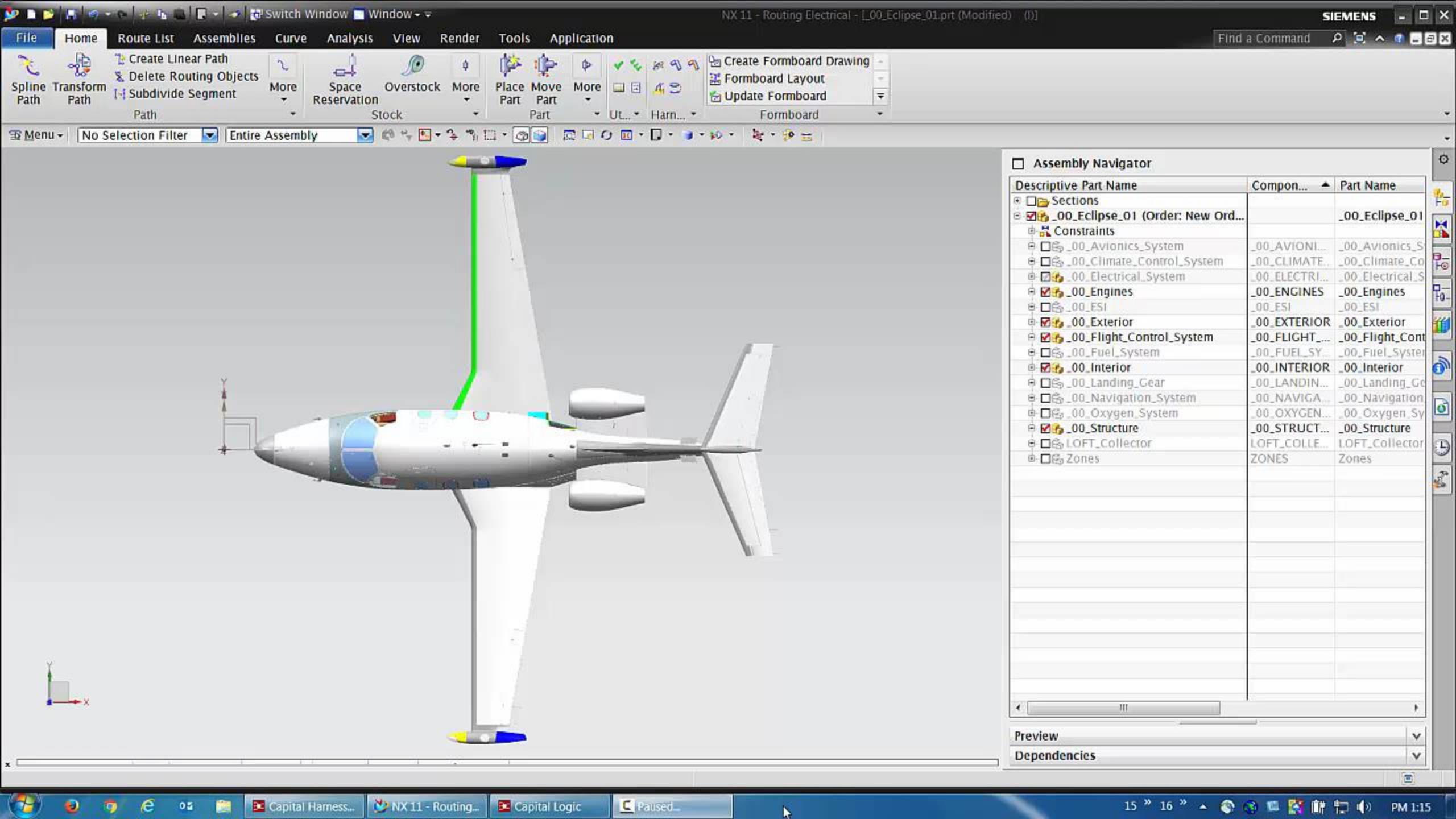
Principle: Best In Class Tools Seamlessly Integrated

Capital Masters Electrical Data, NX Masters Mechanical Data



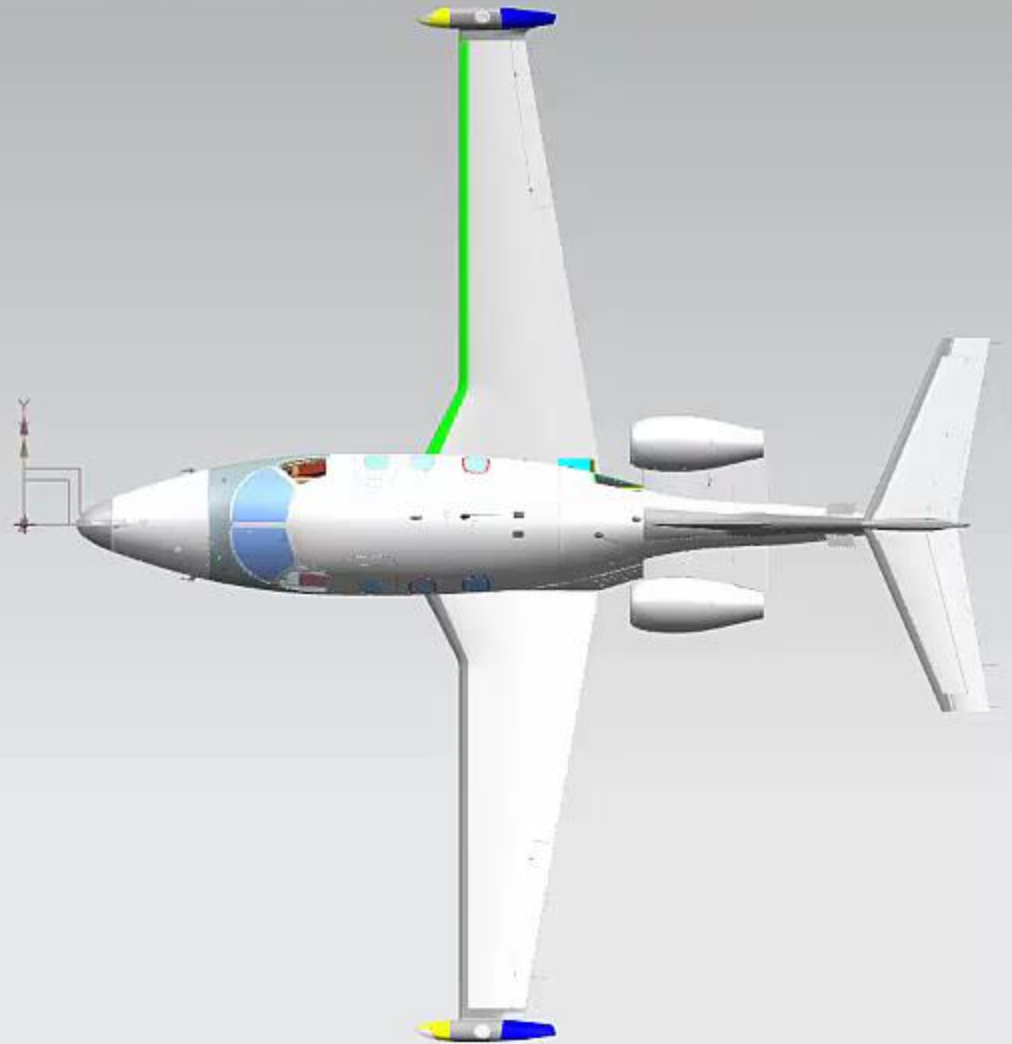
- Concurrent electrical/mechanical design is needed to compress development cycles
- Advanced functionality is required for concurrent design (examples)
 - Automatic object linking
 - Design change detection
 - Dynamic cross highlighting
 - Design change policies





Spline Path Transform Path Create Linear Path Delete Routing Objects Subdivide Segment Path More Space Reservation Overstock More Place Part Move Part More UT... Harn... Formboard

Menu No Selection Filter Entire Assembly



Assembly Navigator

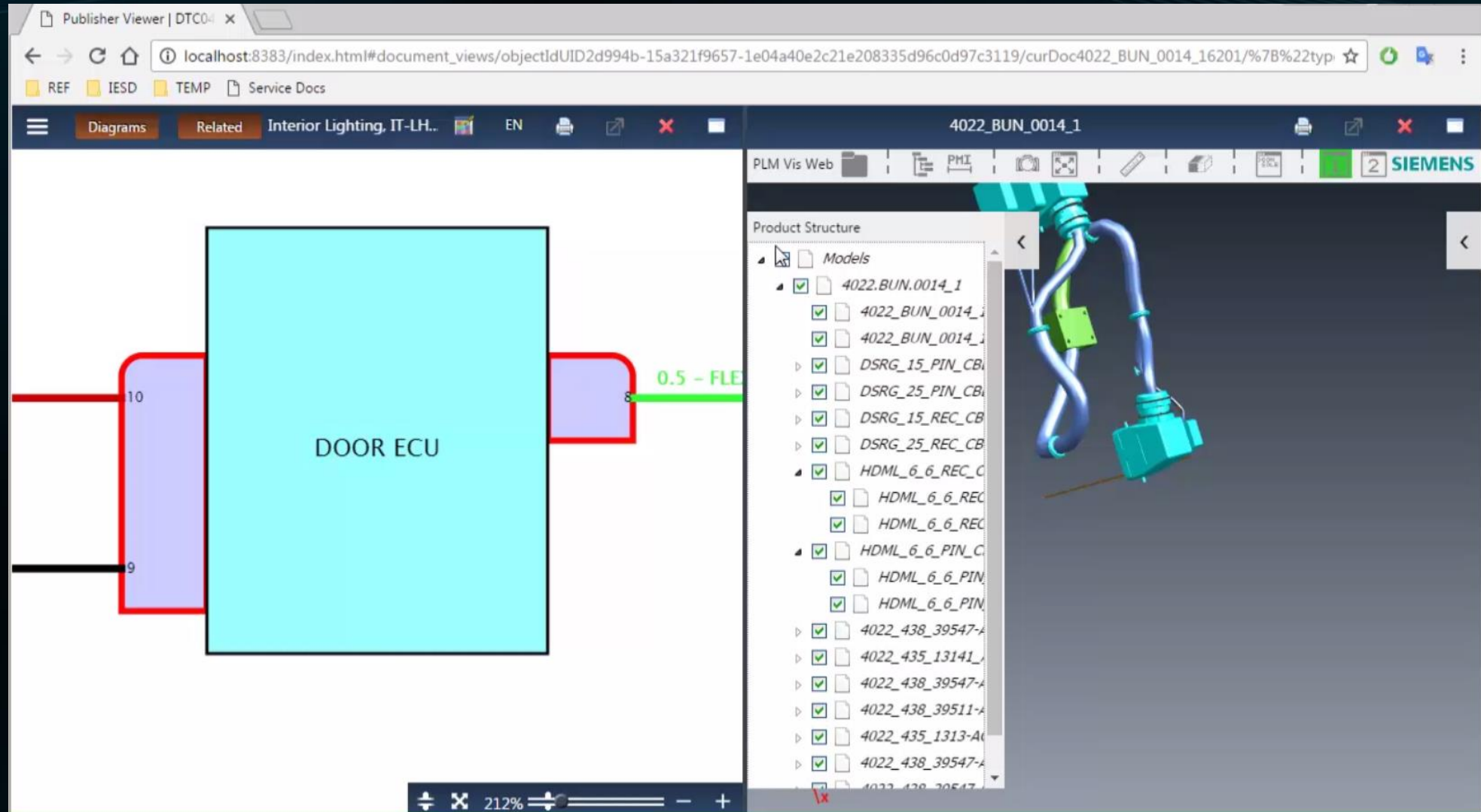
Descriptive Part Name	Compon...	Part Name
Sections		
<input checked="" type="checkbox"/> _00_Eclipse_01 (Order: New Ord...		_00_Eclipse_01
Constraints		
<input type="checkbox"/> _00_Avionics_System	_00_AVIONI...	_00_Avionics_S
<input type="checkbox"/> _00_Climate_Control_System	_00_CLIMATE...	_00_Climate_Co
<input checked="" type="checkbox"/> _00_Electrical_System	_00_ELECTRI...	_00_Electrical_S
<input checked="" type="checkbox"/> _00_Engines	_00_ENGINES	_00_Engines
<input type="checkbox"/> _00_ESI	_00_ESI	_00_ESI
<input checked="" type="checkbox"/> _00_Exterior	_00_EXTERIOR	_00_Exterior
<input checked="" type="checkbox"/> _00_Flight_Control_System	_00_FLIGHT_...	_00_Flight_Cont
<input type="checkbox"/> _00_Fuel_System	_00_FUEL_SY	_00_Fuel_System
<input checked="" type="checkbox"/> _00_Interior	_00_INTERIOR	_00_Interior
<input type="checkbox"/> _00_Landing_Gear	_00_LANDIN...	_00_Landing_Ge
<input type="checkbox"/> _00_Navigation_System	_00_NAVIGA...	_00_Navigation
<input type="checkbox"/> _00_Oxygen_System	_00_OXYGEN...	_00_Oxygen_Sy
<input checked="" type="checkbox"/> _00_Structure	_00_STRUCT...	_00_Structure
<input type="checkbox"/> LOFT_Collector	LOFT_COLLE...	LOFT_Collector
<input type="checkbox"/> Zones	ZONES	Zones

Preview Dependencies



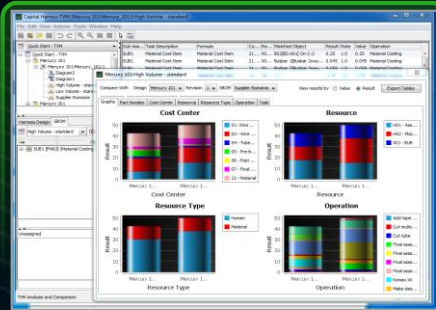
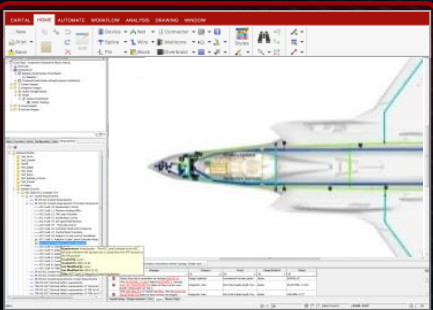
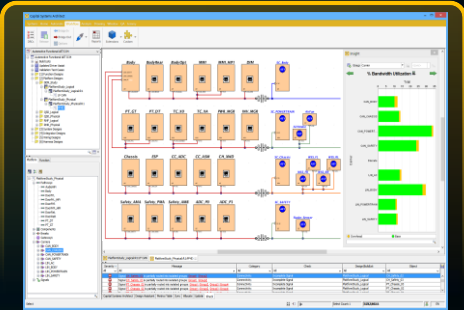
Not Just Design: 3D Context To Aid Troubleshooting

Embedded JT Viewer In Service Technician Environment



Electrical Domain Flow

Extended Flow Supported By Capital Tool Suite



Define

Design

E

Produce

Maintain

Data & Process Management
Enterprise Integration



Requirements
Functional Models
Workflow



Product Plans
MCAD
Test Cases



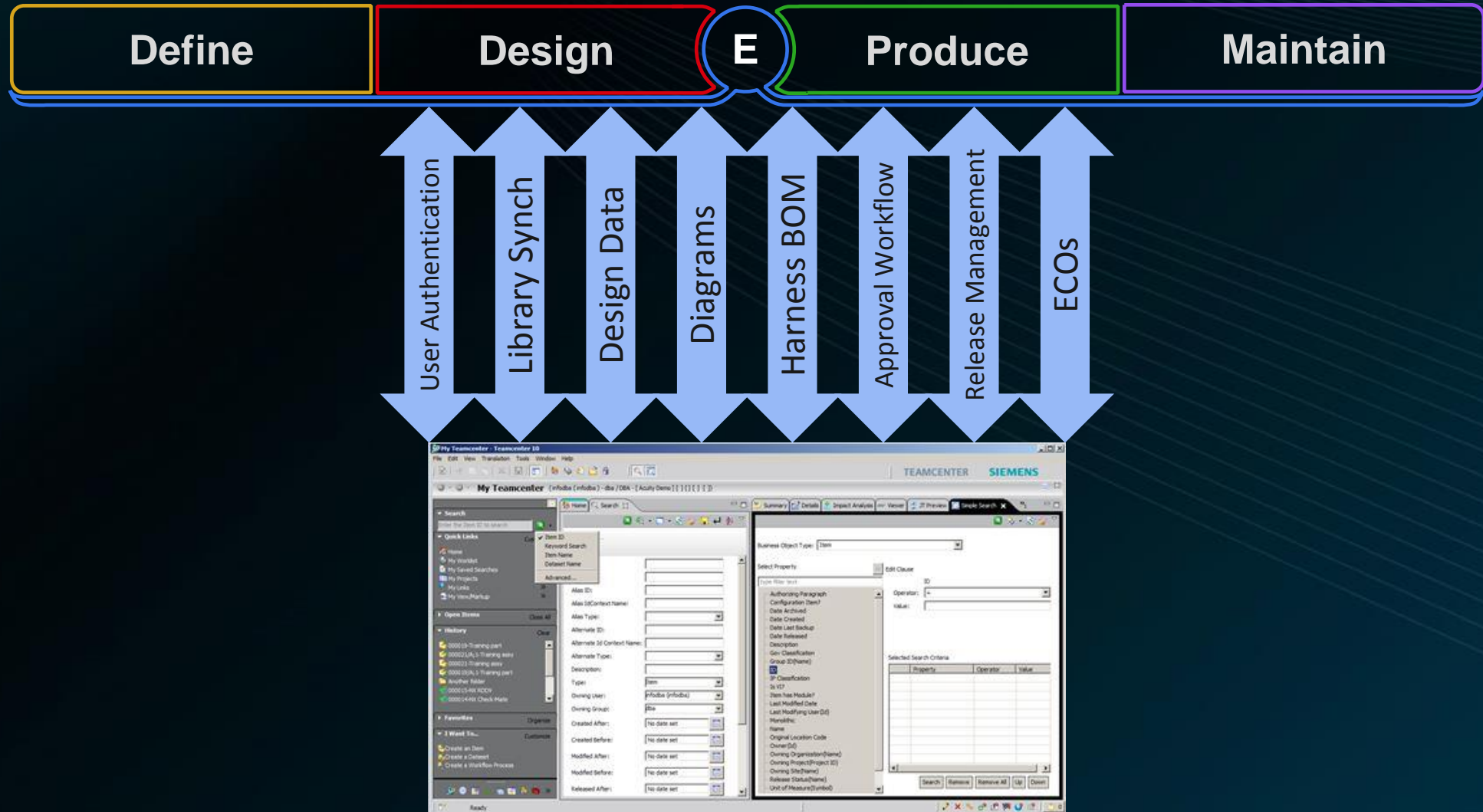
MES & ERP
Manufacturing
Equipment



PLM
Diagnostics

Capital/Teamcenter Integration: Example Use Cases

Flexible Integration Architecture Supports Multiple Scenarios



Customer Example: Daimler Trucks



Mentor
Graphics

Products ▾

Solutions

Training & Services

Company

Blogs

SUPPORT



“To develop such an advanced truck requires not only powerful design automation, but also robust design data management. Capital was the **natural tool choice** because it is so strong in these areas, and is designed to be used by large, multi-site organizations”


Wolfgang Appel
Senior Manager, Mechatronic Engineering

Summary


- Development of complex equipment today involves electrical/mechanical collaboration
- Concurrent electrical/mechanical design requires advanced functionality
- Capital & NX are best in class tools, seamlessly integrated
- Major customers are benefiting from the technology

Commercial Reality
Powerful Tool Support Needed

- Example factors
 - Cost containment
 - Time to market
 - Mass customization
 - Traceability & verification
- ▶ Technical complexity + commercial reality: electrical domain must be part of the “digital twin”

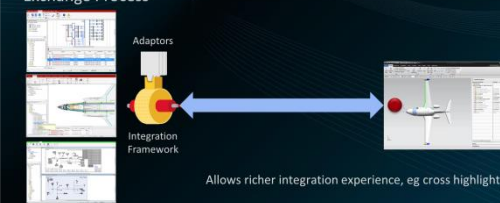


Principle: Best In Class Tools Seamlessly Integrated
Capital Masters Electrical Data, NX Masters Mechanical Data




- Concurrent electrical/mechanical design needed to compress development cycles
- Advanced functionality required to support concurrent design (examples)
 - Dynamic cross highlighting
 - Design change detection
 - Automatic object linking
 - Design change policies

Capital/NX Integration Technology
Exchange Process



Allows richer integration experience, eg cross highlighting

Customer Example: Daimler Trucks



“To develop such an advanced truck requires not only powerful design automation, but also robust design data management. Capital was the natural tool choice because it is so strong in these areas, and is designed to be used by large, multi-site organizations”

Wolfgang Appel
Senior Manager, Mechatronic Engineering

www.mentor.com/products/core/electrical/design-automation/mentor-daimler-trucks



www.mentor.com/electrical